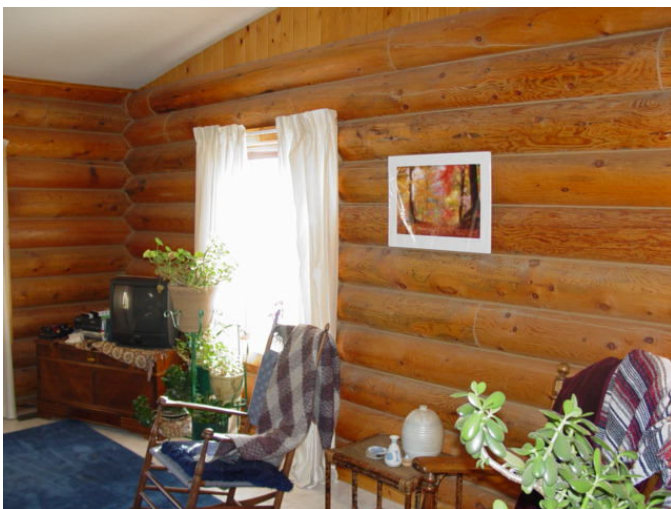
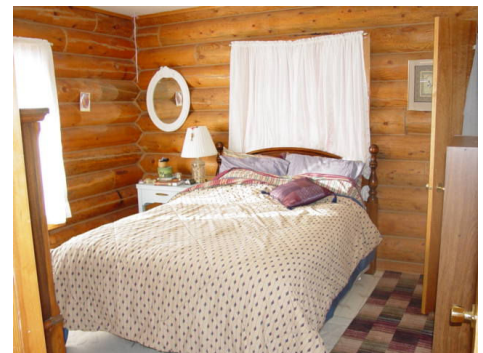


“2828 Cane Street”

Pompey’s Pillar, MT

Priced at \$105,000 Cash or New Loan



2828 Cane St
2 Bedroom Log Home
Orchard containing many fruit trees
1200 Square Feet all on One Level
Nice Country Kitchen
Porch/Deck
On Historic Lewis & Clark Route 1 Mile from
the Pompey’s Pillar Landmark
Built in 1991
21,000 Square Foot Lot
Taxes \$841
Priced Right
Schools – Huntley Project in Worden

Marketed by:
Cimarron Real Estate Investments
Andrew E. Wilson - Broker
724 Grand Avenue
Billings, MT 59101
Office 406-245-6080

Andy’s Cell 406-860-3463

www.cimrealty.com